



KIMBERLY LOVE
Portfolio

ABOUT ME

Design Specialties

- Healthcare Environments
- Full-spectrum design from concept to install
- Computer aided designs
- Digital and traditional presentations

Technical Skill

- Configura CET Designer
- CAP/Giza 2020
- Auto CAD, Revit, and Impression 2D and 3D
- Photoshop & InDesign CS6
- Hedberg Data Systems
- Core and Lead Pricing Systems
- Site measurements
- Ability to read and create architectural, construction, lighting, and FF&E plans
- Hand and computer drafting
- Hand and computer rendering

Design Skills

- Project Budgeting and engineering
- Experienced in complete project management
- Commercial and residential furniture specifications including: systems, desking seating, LAN furniture, commercial outdoor furniture, and all textile applications
- Focus in ergonomics and holistic design
- Experience with managing relocations and liquidations
- Built relationships with local commercial furniture representatives and groups
- Textile and COM estimations
- Experience coordinating with furniture, carpet, & fabric vendors, dealers and manufacturers
- Training in LEED standards
- Web media and blogging

Education

The University of Georgia

- Bachelor of Science, Family and Consumer Sciences
- Major: Furnishings and Interiors
- Minor: Psychology

Affiliations

- Atlanta Beltline Partnership
- National Kitchen and Bath Association
- Gamma Phi Delta Sorority Inc.
- American Society of Interior Designers

About

Healthcare

Commercial

Residential & Hospitality

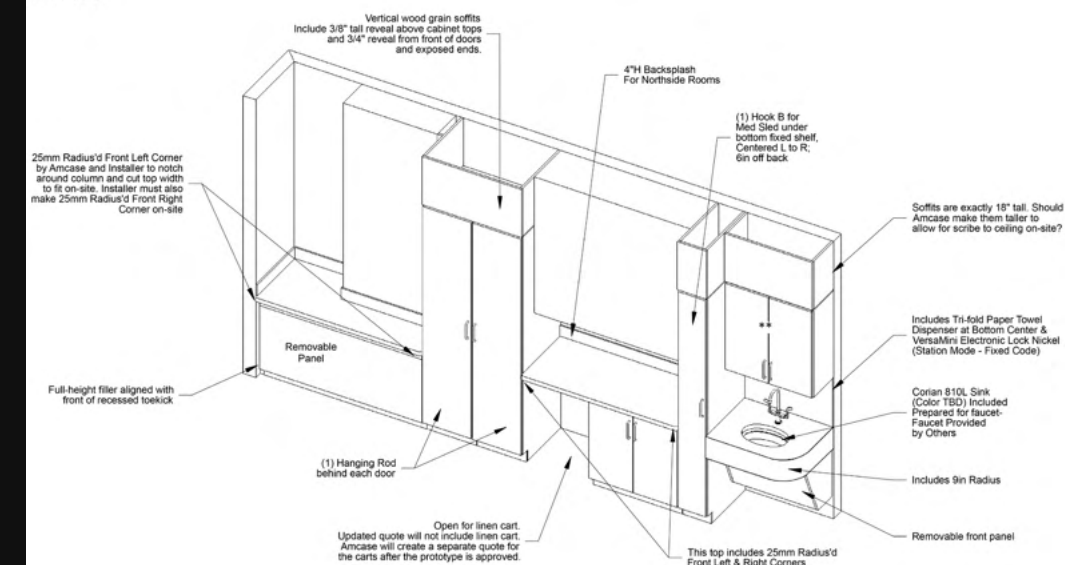
Miscellaneous

Healthcare

PROJECTS



PLAN



About

Healthcare

Commercial

Residential & Hospitality

LACTATION STATIONS

Birmingham, AL
2024

POD TYPICAL: Layout 3

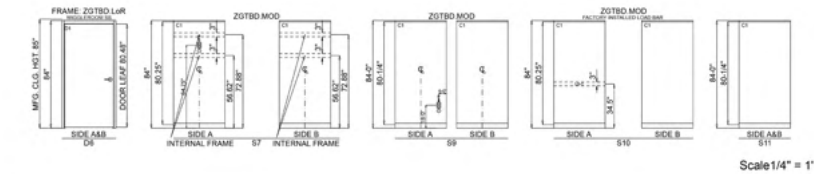
Right-Hand Orientation with Door on Short Side



17/24

KEY & LEGENDS

Panel Elevations & Notes



GENIUS PROJECT NOTES		GENIUS TRIM TYPES	
JAMB COMPLIANT	NO	0" MAX COVER	(1) STAINLESS 160
RECURRING WARRANTY	NO	RECURRING WARRANTY (ON ALL RAILS)	(2) STAINLESS 160
DELTA TYPE	NO	SHOULD BE USED ON DELTA AND RSL	(3) SILVER ANODIZED ALUMINUM 1/8" MINUTE ETC
FLUSH TYPE	YES	SHOULD NOT BE USED ON DELTA AND RSL	(4) CLEAR ANODIZED ALUMINUM 1/8" MINUTE ETC
INTERNAL COVER	N/A	SHOULD BE USED ON COVERED TRIM	(5) STAINLESS 160
EXTERNAL COVER, KIT	N/A		
FLUSH BEARING KIT	NO		
FLUSH BEARING KIT	NO		
WIGLOOLISM SS TRIM TYPES	NO		
JAMB COMPLIANT	NO	0" MAX COVER	(1) STAINLESS 160
RECURRING WARRANTY	NO	RECURRING WARRANTY (ON ALL RAILS)	(2) STAINLESS 160
DELTA TYPE	NO	SHOULD BE USED ON DELTA AND RSL	(3) SILVER ANODIZED ALUMINUM 1/8" MINUTE ETC
FLUSH TYPE	YES	SHOULD NOT BE USED ON DELTA AND RSL	(4) CLEAR ANODIZED ALUMINUM 1/8" MINUTE ETC
INTERNAL COVER	N/A		
EXTERNAL COVER, KIT	N/A		
FLUSH BEARING KIT	NO		
FLUSH BEARING KIT	NO		
WIGLOOLISM SS PROJECT NOTES	NO		
JAMB COMPLIANT	NO	0" MAX COVER	(1) STAINLESS 160
RECURRING WARRANTY	NO	RECURRING WARRANTY (ON ALL RAILS)	(2) STAINLESS 160
DELTA TYPE	NO	SHOULD BE USED ON DELTA AND RSL	(3) SILVER ANODIZED ALUMINUM 1/8" MINUTE ETC
FLUSH TYPE	YES	SHOULD NOT BE USED ON DELTA AND RSL	(4) CLEAR ANODIZED ALUMINUM 1/8" MINUTE ETC
INTERNAL COVER	N/A		
EXTERNAL COVER, KIT	N/A		
FLUSH BEARING KIT	NO		
FLUSH BEARING KIT	NO		
WIGLOOLISM SS PROJECT NOTES	NO		
JAMB COMPLIANT	NO	0" MAX COVER	(1) STAINLESS 160
RECURRING WARRANTY	NO	RECURRING WARRANTY (ON ALL RAILS)	(2) STAINLESS 160
DELTA TYPE	NO	SHOULD BE USED ON DELTA AND RSL	(3) SILVER ANODIZED ALUMINUM 1/8" MINUTE ETC
FLUSH TYPE	YES	SHOULD NOT BE USED ON DELTA AND RSL	(4) CLEAR ANODIZED ALUMINUM 1/8" MINUTE ETC
INTERNAL COVER	N/A		
EXTERNAL COVER, KIT	N/A		
FLUSH BEARING KIT	NO		
FLUSH BEARING KIT	NO		
WIGLOOLISM SS PROJECT NOTES	NO		
JAMB COMPLIANT	NO	0" MAX COVER	(1) STAINLESS 160
RECURRING WARRANTY	NO	RECURRING WARRANTY (ON ALL RAILS)	(2) STAINLESS 160
DELTA TYPE	NO	SHOULD BE USED ON DELTA AND RSL	(3) SILVER ANODIZED ALUMINUM 1/8" MINUTE ETC
FLUSH TYPE	YES	SHOULD NOT BE USED ON DELTA AND RSL	(4) CLEAR ANODIZED ALUMINUM 1/8" MINUTE ETC
INTERNAL COVER	N/A		
EXTERNAL COVER, KIT	N/A		
FLUSH BEARING KIT	NO		
FLUSH BEARING KIT	NO		
WIGLOOLISM SS PROJECT NOTES	NO		
JAMB COMPLIANT	NO	0" MAX COVER	(1) STAINLESS 160
RECURRING WARRANTY	NO	RECURRING WARRANTY (ON ALL RAILS)	(2) STAINLESS 160
DELTA TYPE	NO	SHOULD BE USED ON DELTA AND RSL	(3) SILVER ANODIZED ALUMINUM 1/8" MINUTE ETC
FLUSH TYPE	YES	SHOULD NOT BE USED ON DELTA AND RSL	(4) CLEAR ANODIZED ALUMINUM 1/8" MINUTE ETC
INTERNAL COVER	N/A		
EXTERNAL COVER, KIT	N/A		
FLUSH BEARING KIT	NO		
FLUSH BEARING KIT	NO		
WIGLOOLISM SS PROJECT NOTES	NO		
JAMB COMPLIANT	NO	0" MAX COVER	(1) STAINLESS 160
RECURRING WARRANTY	NO	RECURRING WARRANTY (ON ALL RAILS)	(2) STAINLESS 160
DELTA TYPE	NO	SHOULD BE USED ON DELTA AND RSL	(3) SILVER ANODIZED ALUMINUM 1/8" MINUTE ETC
FLUSH TYPE	YES	SHOULD NOT BE USED ON DELTA AND RSL	(4) CLEAR ANODIZED ALUMINUM 1/8" MINUTE ETC
INTERNAL COVER	N/A		
EXTERNAL COVER, KIT	N/A		
FLUSH BEARING KIT	NO		
FLUSH BEARING KIT	NO		
WIGLOOLISM SS PROJECT NOTES	NO		
JAMB COMPLIANT	NO	0" MAX COVER	(1) STAINLESS 160
RECURRING WARRANTY	NO	RECURRING WARRANTY (ON ALL RAILS)	(2) STAINLESS 160
DELTA TYPE	NO	SHOULD BE USED ON DELTA AND RSL	(3) SILVER ANODIZED ALUMINUM 1/8" MINUTE ETC
FLUSH TYPE	YES	SHOULD NOT BE USED ON DELTA AND RSL	(4) CLEAR ANODIZED ALUMINUM 1/8" MINUTE ETC
INTERNAL COVER	N/A		
EXTERNAL COVER, KIT	N/A		
FLUSH BEARING KIT	NO		
FLUSH BEARING KIT	NO		
WIGLOOLISM SS PROJECT NOTES	NO		
JAMB COMPLIANT	NO	0" MAX COVER	(1) STAINLESS 160
RECURRING WARRANTY	NO	RECURRING WARRANTY (ON ALL RAILS)	(2) STAINLESS 160
DELTA TYPE	NO	SHOULD BE USED ON DELTA AND RSL	(3) SILVER ANODIZED ALUMINUM 1/8" MINUTE ETC
FLUSH TYPE	YES	SHOULD NOT BE USED ON DELTA AND RSL	(4) CLEAR ANODIZED ALUMINUM 1/8" MINUTE ETC
INTERNAL COVER	N/A		
EXTERNAL COVER, KIT	N/A		
FLUSH BEARING KIT	NO		
FLUSH BEARING KIT	NO		
WIGLOOLISM SS PROJECT NOTES	NO		
JAMB COMPLIANT	NO	0" MAX COVER	(1) STAINLESS 160
RECURRING WARRANTY	NO	RECURRING WARRANTY (ON ALL RAILS)	(2) STAINLESS 160
DELTA TYPE	NO	SHOULD BE USED ON DELTA AND RSL	(3) SILVER ANODIZED ALUMINUM 1/8" MINUTE ETC
FLUSH TYPE	YES	SHOULD NOT BE USED ON DELTA AND RSL	(4) CLEAR ANODIZED ALUMINUM 1/8" MINUTE ETC
INTERNAL COVER	N/A		
EXTERNAL COVER, KIT	N/A		
FLUSH BEARING KIT	NO		
FLUSH BEARING KIT	NO		
WIGLOOLISM SS PROJECT NOTES	NO		
JAMB COMPLIANT	NO	0" MAX COVER	(1) STAINLESS 160
RECURRING WARRANTY	NO	RECURRING WARRANTY (ON ALL RAILS)	(2) STAINLESS 160
DELTA TYPE	NO	SHOULD BE USED ON DELTA AND RSL	(3) SILVER ANODIZED ALUMINUM 1/8" MINUTE ETC
FLUSH TYPE	YES	SHOULD NOT BE USED ON DELTA AND RSL	(4) CLEAR ANODIZED ALUMINUM 1/8" MINUTE ETC
INTERNAL COVER	N/A		
EXTERNAL COVER, KIT	N/A		
FLUSH BEARING KIT	NO		
FLUSH BEARING KIT	NO		
WIGLOOLISM SS PROJECT NOTES	NO		
JAMB COMPLIANT	NO	0" MAX COVER	(1) STAINLESS 160
RECURRING WARRANTY	NO	RECURRING WARRANTY (ON ALL RAILS)	(2) STAINLESS 160
DELTA TYPE	NO	SHOULD BE USED ON DELTA AND RSL	(3) SILVER ANODIZED ALUMINUM 1/8" MINUTE ETC
FLUSH TYPE	YES	SHOULD NOT BE USED ON DELTA AND RSL	(4) CLEAR ANODIZED ALUMINUM 1/8" MINUTE ETC
INTERNAL COVER	N/A		
EXTERNAL COVER, KIT	N/A		
FLUSH BEARING KIT	NO		
FLUSH BEARING KIT	NO		
WIGLOOLISM SS PROJECT NOTES	NO		
JAMB COMPLIANT	NO	0" MAX COVER	(1) STAINLESS 160
RECURRING WARRANTY	NO	RECURRING WARRANTY (ON ALL RAILS)	(2) STAINLESS 160
DELTA TYPE	NO	SHOULD BE USED ON DELTA AND RSL	(3) SILVER ANODIZED ALUMINUM 1/8" MINUTE ETC
FLUSH TYPE	YES	SHOULD NOT BE USED ON DELTA AND RSL	(4) CLEAR ANODIZED ALUMINUM 1/8" MINUTE ETC
INTERNAL COVER	N/A		
EXTERNAL COVER, KIT	N/A		
FLUSH BEARING KIT	NO		
FLUSH BEARING KIT	NO		
WIGLOOLISM SS PROJECT NOTES	NO		
JAMB COMPLIANT	NO	0" MAX COVER	(1) STAINLESS 160
RECURRING WARRANTY	NO	RECURRING WARRANTY (ON ALL RAILS)	(2) STAINLESS 160
DELTA TYPE	NO	SHOULD BE USED ON DELTA AND RSL	(3) SILVER ANODIZED ALUMINUM 1/8" MINUTE ETC
FLUSH TYPE	YES	SHOULD NOT BE USED ON DELTA AND RSL	(4) CLEAR ANODIZED ALUMINUM 1/8" MINUTE ETC
INTERNAL COVER	N/A		
EXTERNAL COVER, KIT	N/A		
FLUSH BEARING KIT	NO		
FLUSH BEARING KIT	NO		
WIGLOOLISM SS PROJECT NOTES	NO		
JAMB COMPLIANT	NO	0" MAX COVER	(1) STAINLESS 160
RECURRING WARRANTY	NO	RECURRING WARRANTY (ON ALL RAILS)	(2) STAINLESS 160
DELTA TYPE	NO	SHOULD BE USED ON DELTA AND RSL	(3) SILVER ANODIZED ALUMINUM 1/8" MINUTE ETC
FLUSH TYPE	YES	SHOULD NOT BE USED ON DELTA AND RSL	(4) CLEAR ANODIZED ALUMINUM 1/8" MINUTE ETC
INTERNAL COVER	N/A		
EXTERNAL COVER, KIT	N/A		
FLUSH BEARING KIT	NO		
FLUSH BEARING KIT	NO		
WIGLOOLISM SS PROJECT NOTES	NO		
JAMB COMPLIANT	NO	0" MAX COVER	(1) STAINLESS 160
RECURRING WARRANTY	NO	RECURRING WARRANTY (ON ALL RAILS)	(2) STAINLESS 160
DELTA TYPE	NO	SHOULD BE USED ON DELTA AND RSL	(3) SILVER ANODIZED ALUMINUM 1/8" MINUTE ETC
FLUSH TYPE	YES	SHOULD NOT BE USED ON DELTA AND RSL	(4) CLEAR ANODIZED ALUMINUM 1/8" MINUTE ETC
INTERNAL COVER	N/A		
EXTERNAL COVER, KIT	N/A		
FLUSH BEARING KIT	NO		
FLUSH BEARING KIT	NO		
WIGLOOLISM SS PROJECT NOTES	NO		
JAMB COMPLIANT	NO	0" MAX COVER	(1) STAINLESS 160
RECURRING WARRANTY	NO	RECURRING WARRANTY (ON ALL RAILS)	(2) STAINLESS 160
DELTA TYPE	NO	SHOULD BE USED ON DELTA AND RSL	(3) SILVER ANODIZED ALUMINUM 1/8" MINUTE ETC
FLUSH TYPE	YES	SHOULD NOT BE USED ON DELTA AND RSL	(4) CLEAR ANODIZED ALUMINUM 1/8" MINUTE ETC
INTERNAL COVER	N/A		
EXTERNAL COVER, KIT	N/A		
FLUSH BEARING KIT	NO		
FLUSH BEARING KIT	NO		
WIGLOOLISM SS PROJECT NOTES	NO		
JAMB COMPLIANT	NO	0" MAX COVER	(1) STAINLESS 160
RECURRING WARRANTY	NO	RECURRING WARRANTY (ON ALL RAILS)	(2) STAINLESS 160
DELTA TYPE	NO	SHOULD BE USED ON DELTA AND RSL	(3) SILVER ANODIZED ALUMINUM 1/8" MINUTE ETC
FLUSH TYPE	YES	SHOULD NOT BE USED ON DELTA AND RSL	(4) CLEAR ANODIZED ALUMINUM 1/8" MINUTE ETC
INTERNAL COVER	N/A		
EXTERNAL COVER, KIT	N/A		
FLUSH BEARING KIT	NO		
FLUSH BEARING KIT	NO		
WIGLOOLISM SS PROJECT NOTES	NO		
JAMB COMPLIANT	NO	0" MAX COVER	(1) STAINLESS 160
RECURRING WARRANTY	NO	RECURRING WARRANTY (ON ALL RAILS)	(2) STAINLESS 160
DELTA TYPE	NO	SHOULD BE USED ON DELTA AND RSL	(3) SILVER ANODIZED ALUMINUM 1/8" MINUTE ETC
FLUSH TYPE	YES	SHOULD NOT BE USED ON DELTA AND RSL	(4) CLEAR ANODIZED ALUMINUM 1/8" MINUTE ETC
INTERNAL COVER	N/A		
EXTERNAL COVER, KIT	N/A		
FLUSH BEARING KIT	NO		
FLUSH BEARING KIT	NO		
WIGLOOLISM SS PROJECT NOTES	NO		
JAMB COMPLIANT	NO	0" MAX COVER	(1) STAINLESS 160
RECURRING WARRANTY	NO	RECURRING WARRANTY (ON ALL RAILS)	(2) STAINLESS 160
DELTA TYPE	NO	SHOULD BE USED ON DELTA AND RSL	(3) SILVER ANODIZED ALUMINUM 1/8" MINUTE ETC
FLUSH TYPE	YES	SHOULD NOT BE USED ON DELTA AND RSL	(4) CLEAR ANODIZED ALUMINUM 1/8" MINUTE ETC
INTERNAL COVER	N/A		
EXTERNAL COVER, KIT	N/A		
FLUSH BEARING KIT	NO		
FLUSH BEARING KIT	NO		
WIGLOOLISM SS PROJECT NOTES	NO		
JAMB COMPLIANT	NO	0" MAX COVER	(1) STAINLESS 160
RECURRING WARRANTY	NO	RECURRING WARRANTY (ON ALL RAILS)	(2) STAINLESS 160
DELTA TYPE	NO	SHOULD BE USED ON DELTA AND RSL	(3) SILVER ANODIZED ALUMINUM 1/8" MINUTE ETC
FLUSH TYPE	YES	SHOULD NOT BE USED ON DELTA AND RSL	(4) CLEAR ANODIZED ALUMINUM 1/8" MINUTE ETC
INTERNAL COVER	N/A		
EXTERNAL COVER, KIT	N/A		
FLUSH BEARING KIT	NO		
FLUSH BEARING KIT	NO		
WIGLOOLISM SS PROJECT NOTES	NO		
JAMB COMPLIANT	NO	0" MAX COVER	(1) STAINLESS 160
RECURRING WARRANTY	NO	RECURRING WARRANTY (ON ALL RAILS)	(2) STAINLESS 160
DELTA TYPE	NO	SHOULD BE USED ON DELTA AND RSL	(3) SILVER ANODIZED ALUMINUM 1/8" MINUTE ETC
FLUSH TYPE	YES	SHOULD NOT BE USED ON DELTA AND RSL	(4) CLEAR ANODIZED ALUMINUM 1/8" MINUTE ETC
INTERNAL COVER	N/A		
EXTERNAL COVER, KIT	N/A		
FLUSH BEARING KIT	NO		
FLUSH BEARING KIT	NO		
WIGLOOLISM SS PROJECT NOTES	NO		
JAMB COMPLIANT	NO	0" MAX COVER	(1) STAINLESS 160
RECURRING WARRANTY	NO	RECURRING WARRANTY (ON ALL RAILS)	(2) STAINLESS 160
DELTA TYPE	NO	SHOULD BE USED ON DELTA AND RSL	(3) SILVER ANODIZED ALUMINUM 1/8" MINUTE ETC
FLUSH TYPE	YES	SHOULD NOT BE USED ON DELTA AND RSL	(4) CLEAR ANODIZED ALUMINUM 1/8" MINUTE ETC
INTERNAL COVER	N/A		
EXTERNAL COVER, KIT	N/A		
FLUSH BEARING KIT	NO		
FLUSH BEARING KIT	NO		
WIGLOOLISM SS PROJECT NOTES	NO		
JAMB COMPLIANT	NO	0" MAX COVER	(1) STAINLESS 160
RECURRING WARRANTY	NO	RECURRING WARRANTY (ON ALL RAILS)	(2) STAINLESS 160
DELTA TYPE	NO	SHOULD BE USED ON DELTA AND RSL	(3) SILVER ANODIZED ALUMINUM 1/8" MINUTE ETC
FLUSH TYPE	YES	SHOULD NOT BE USED ON DELTA AND RSL	(4) CLEAR ANODIZED ALUMINUM 1/8" MINUTE ETC
INTERNAL COVER	N/A		
EXTERNAL COVER, KIT	N/A		
FLUSH BEARING KIT	NO		
FLUSH BEARING KIT	NO		
WIGLOOLISM SS PROJECT NOTES	NO		
JAMB COMPLIANT	NO	0" MAX COVER	(1) STAINLESS 160
RECURRING WARRANTY	NO	RECURRING WARRANTY (ON ALL RAILS)	(2) STAINLESS 160
DELTA TYPE	NO	SHOULD BE USED ON DELTA AND RSL	(3) SILVER ANODIZED ALUMINUM 1/8" MINUTE ETC
FLUSH TYPE	YES	SHOULD NOT BE USED ON DELTA AND RSL	(4) CLEAR ANODIZED ALUMINUM 1/8" MINUTE ETC
INTERNAL COVER	N/A		
EXTERNAL COVER, KIT	N/A		
FLUSH BEARING KIT	NO		
FLUSH BEARING KIT	NO		
WIGLOOLISM SS PROJECT NOTES	NO		
JAMB COMPLIANT	NO	0" MAX COVER	(1) STAINLESS 160
RECURRING WARRANTY	NO	RECURRING WARRANTY (ON ALL RAILS)	(2) STAINLESS 160
DELTA TYPE	NO	SHOULD BE USED ON DELTA AND RSL	(3) SILVER ANODIZED ALUMINUM 1/8" MINUTE ETC
FLUSH TYPE	YES	SHOULD NOT BE USED ON DELTA AND RSL	(4) CLEAR ANODIZED ALUMINUM 1/8" MINUTE ETC
INTERNAL COVER	N/A		
EXTERNAL COVER, KIT	N/A		
FLUSH BEARING KIT	NO		
FLUSH BEARING KIT	NO		
WIGLOOLISM SS PROJECT NOTES	NO		
JAMB COMPLIANT	NO	0" MAX COVER	(1) STAINLESS 160
RECURRING WARRANTY	NO	RECURRING WARRANTY (ON ALL RAILS)	(2) STAINLESS 160
DELTA TYPE	NO	SHOULD BE USED ON DELTA AND RSL	(3) SILVER ANODIZED ALUMINUM 1/8" MINUTE ETC
FLUSH TYPE	YES	SHOULD NOT BE USED ON DELTA AND RSL	(4) CLEAR ANODIZED ALUMINUM 1/8" MINUTE ETC
INTERNAL COVER	N/A		
EXTERNAL COVER, KIT	N/A		
FLUSH BEARING KIT	NO		
FLUSH BEARING KIT	NO		
WIGLOOLISM SS PROJECT NOTES	NO		
JAMB COMPLIANT	NO	0" MAX COVER	(1) STAINLESS 160
RECURRING WARRANTY	NO	RECURRING WARRANTY (ON ALL RAILS)	(2) STAINLESS 160
DELTA TYPE	NO	SHOULD BE USED ON DELTA AND RSL	(3) SILVER ANODIZED ALUMINUM 1/8" MINUTE ETC
FLUSH TYPE	YES	SHOULD NOT BE USED ON DELTA AND RSL	(4) CLEAR ANODIZED ALUMINUM 1/8" MINUTE ETC
INTERNAL COVER	N/A		
EXTERNAL COVER, KIT	N/A		
FLUSH BEARING KIT	NO		
FLUSH BEARING KIT	NO		
WIGLOOLISM SS PROJECT NOTES	NO		
JAMB COMPLIANT	NO	0" MAX COVER	(1) STAINLESS 160
RECURRING WARRANTY	NO	RECURRING WARRANTY (ON ALL RAILS)	(2) STAINLESS 160
DELTA TYPE	NO	SHOULD BE USED ON DELTA AND RSL	(3) SILVER ANODIZED ALUMINUM 1/8" MINUTE ETC
FLUSH TYPE	YES	SHOULD NOT BE USED ON DELTA AND RSL	(4) CLEAR ANODIZED ALUMINUM 1/8" MINUTE ETC
INTERNAL COVER	N/A		
EXTERNAL COVER, KIT	N/A		
FLUSH BEARING KIT	NO		
FLUSH BEARING KIT	NO		
WIGLOOLISM SS PROJECT NOTES	NO		
JAMB COMPLIANT	NO	0" MAX COVER	(1) STAINLESS 160
RECURRING WARRANTY	NO	RECURRING WARRANTY (ON ALL RAILS)	(2) STAINLESS 160
DELTA TYPE	NO	SHOULD BE USED ON DELTA AND RSL	(3) SILVER ANODIZED ALUMINUM 1/8" MINUTE ETC
FLUSH TYPE	YES	SHOULD NOT BE USED ON DELTA AND RSL	(4) CLEAR ANODIZED ALUMINUM 1/8" MINUTE ETC
INTERNAL COVER	N/A		
EXTERNAL COVER, KIT	N/A		
FLUSH BEARING KIT	NO		
FLUSH BEARING KIT	NO		
WIGLOOLISM SS PROJECT NOTES	NO		
JAMB COMPLIANT	NO	0" MAX COVER	(1) STAINLESS 160
RECURRING WARRANTY	NO	RECURRING WARRANTY (ON ALL RAILS)	(2) STAINLESS 160
DELTA TYPE	NO	SHOULD BE USED ON DELTA AND RSL	(3) SILVER ANODIZED ALUMINUM 1/8" MINUTE ETC
FLUSH TYPE	YES	SHOULD NOT BE USED ON DELTA AND RSL	(4) CLEAR ANODIZED ALUMINUM 1/8" MINUTE ETC
INTERNAL COVER	N/A		
EXTERNAL COVER, KIT	N/A		
FLUSH BEARING KIT	NO		
FLUSH BEARING KIT	NO		
WIGLOOLISM SS PROJECT NOTES	NO		
JAMB COMPLIANT	NO	0" MAX COVER	(1) STAINLESS 160
RECURRING WARRANTY	NO	RECURRING WARRANTY (ON ALL RAILS)	(2) STAINLESS 160
DELTA TYPE	NO	SHOULD BE USED ON DELTA AND RSL	(3) SILVER ANODIZED ALUMINUM 1/8" MINUTE ETC
FLUSH TYPE	YES	SHOULD NOT BE USED ON DELTA AND RSL	(4) CLEAR ANODIZED ALUMINUM 1/8" MINUTE ETC
INTERNAL COVER	N/A		
EXTERNAL COVER, KIT	N/A		
FLUSH BEARING KIT	NO		
FLUSH BEARING KIT	NO		
WIGLOOLISM SS PROJECT NOTES	NO		
JAMB COMPLIANT	NO	0" MAX COVER	(1) STAINLESS 160
RECURRING WARRANTY	NO	RECURRING WARRANTY (ON ALL RAILS)	(2) STAINLESS 160
DELTA TYPE	NO	SHOULD BE USED ON DELTA AND RSL	(3) SILVER ANODIZED ALUMINUM 1/8" MINUTE ETC
FLUSH TYPE	YES	SHOULD NOT BE USED ON DELTA AND RSL	(4) CLEAR ANODIZED ALUMINUM 1/8" MINUTE ETC
INTERNAL COVER	N/A		
EXTERNAL COVER, KIT	N/A		
FLUSH BEARING KIT	NO		
FLUSH BEARING KIT	NO		
WIGLOOLISM SS PROJECT NOTES	NO		
JAMB COMPLIANT	NO	0" MAX COVER	(1) STAINLESS 160
RECURRING WARRANTY	NO	RECURRING WARRANTY (ON ALL RAILS)	(2) STAINLESS 160
DELTA TYPE	NO	SHOULD BE USED ON DELTA AND RSL	(3) SILVER ANODIZED ALUMINUM 1/8" MINUTE ETC
FLUSH TYPE	YES	SHOULD NOT BE USED ON DELTA AND RSL	(4) CLEAR ANODIZED ALUMINUM 1/8" MINUTE ETC
INTERNAL COVER	N/A		
EXTERNAL COVER, KIT	N/A		
FLUSH BEARING KIT	NO		
FLUSH BEARING KIT	NO		
WIGLOOLISM SS PROJECT NOTES	NO		
JAMB COMPLIANT	NO	0" MAX COVER	(1) STAINLESS 160
RECURRING WARRANTY	NO	RECURRING WARRANTY (ON ALL RAILS)	(2) STAINLESS 160
DELTA TYPE	NO	SHOULD BE USED ON DELTA AND RSL	(3) SILVER ANODIZED ALUMINUM 1/8" MINUTE ETC
FLUSH TYPE	YES	SHOULD NOT BE USED ON DELTA AND RSL	(4) CLEAR ANODIZED ALUMINUM 1/8" MINUTE ETC
INTERNAL COVER	N/A		
EXTERNAL COVER, KIT	N/A		
FLUSH BEARING KIT	NO		
FLUSH BEARING KIT	NO		
WIGLOOLISM SS PROJECT NOTES	NO		
JAMB COMPLIANT	NO	0" MAX COVER	(1) STAINLESS 160
RECURRING WARRANTY	NO	RECURRING WARRANTY (ON ALL RAILS)	(2) STAINLESS 160
DELTA TYPE	NO	SHOULD BE USED ON DELTA AND RSL	(3) SILVER ANODIZED ALUMINUM 1/8" MINUTE ETC
FLUSH TYPE	YES	SHOULD NOT BE USED ON DELTA AND RSL	(4) CLEAR ANODIZED ALUMINUM 1/8" MINUTE ETC
INTERNAL COVER	N/A		
EXTERNAL COVER, KIT	N/A		
FLUSH BEARING KIT	NO		
FL			

21/24

KEY & LEGENDS

Door Schedule

[illegible]

22/24

About

Healthcare

Commercial

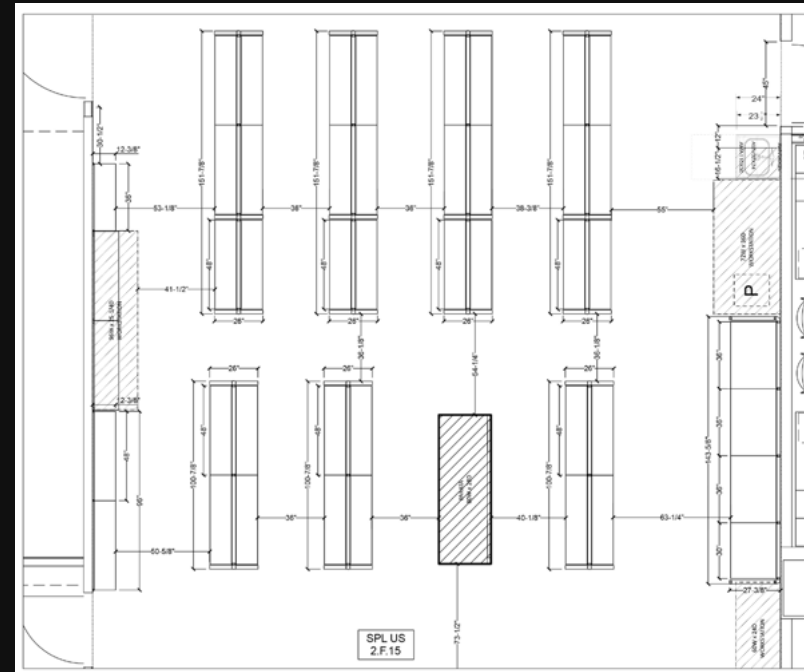
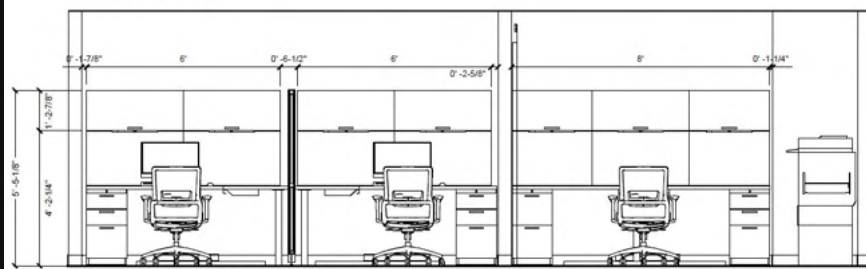
Residential & Hospitality

PHARMACY

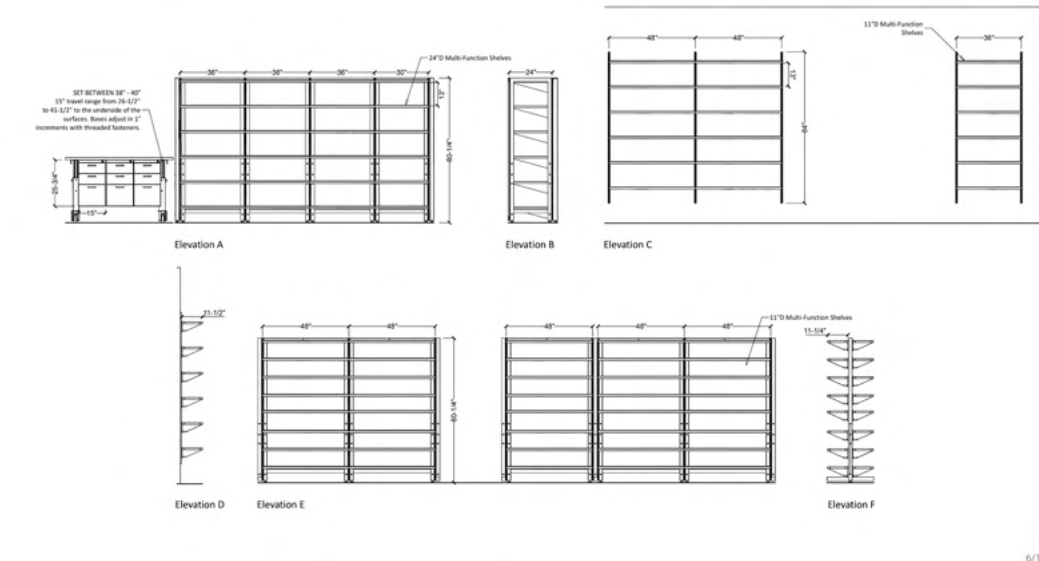
Birmingham, AL
2023

6

Elevation D



2.F.15 Pharmacy
SHELVING



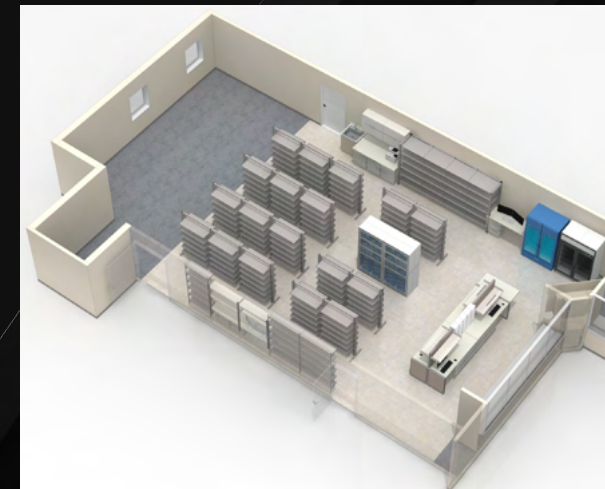
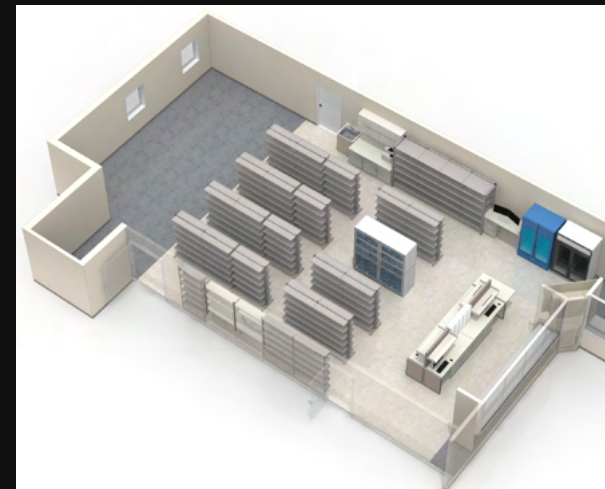
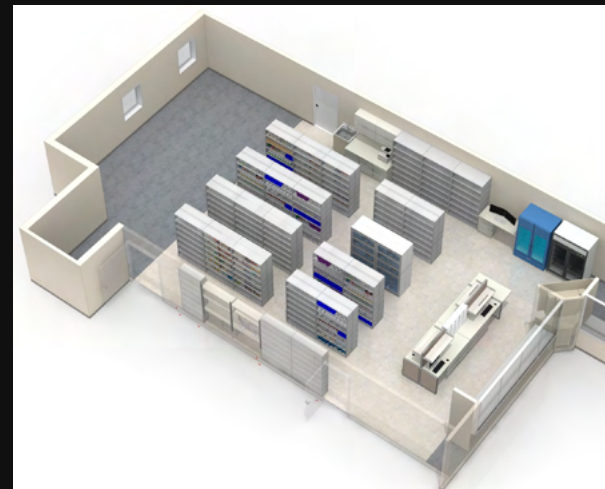
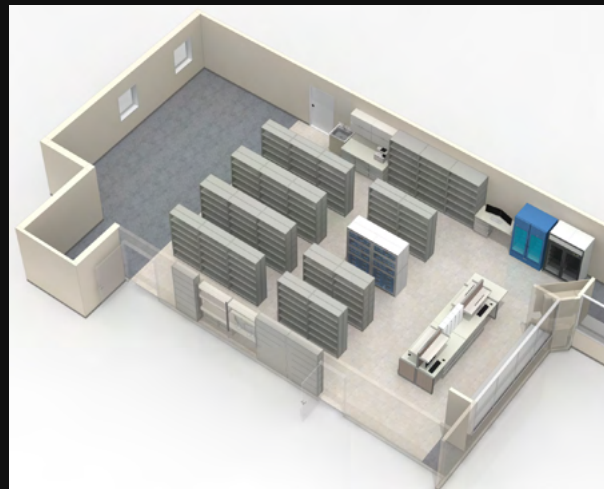
About

Healthcare

Commercial

Residential &
Hospitality

Miscellaneous



PEDIATRIC

Birmingham, AL
2022

WAITING



SERONY TANDEM

- Each seat: 21.5"W x 26"D x 33"H
- Seat height: 18"H
- Clean-thru design
- Upholstered seat and back
- Wall-saver design



BUD OTTOMANS

- Individual Ottomans
- 16"W x 18"H
- Vinyl Seat (Colors available)



MUFFET OTTOMANS

- 24"W x 15"H
- Many Upholstery options available



MIA JR. OTTOMAN

- 18"W x 13"H
- Optional Casters Available
- Optional Pull Handle Available
- Additional Heights Available



POST JR. TABLE

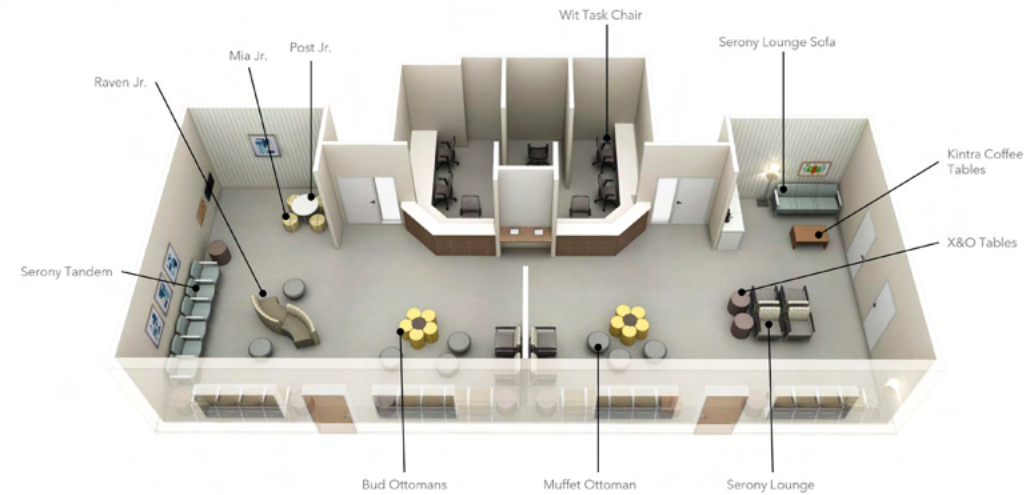
- 30" W x 20"H
- Laminate Top



ERG RAVEN JR.
MODULAR LOUNGE

- 60" Curved Units
- 27.5" H
- Cleanout

WAITING



4

FLOOR PLAN



2

About

Healthcare

Commercial

Residential &
Hospitality

Miscellaneous

INFUSION

Birmingham, AL
2021



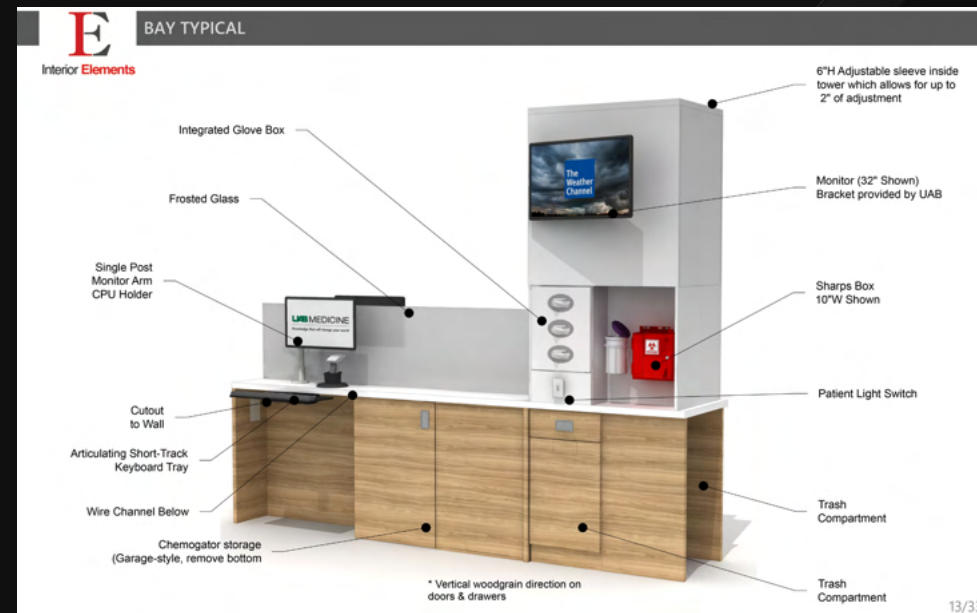
Logic Task Chair
Upholstery: Pauly, Ash
Base: Black
Casters: Hard Floor and
Carpet Casters
(EP) Edge Protector
Heavy Duty Synchro



12/33



9/33



13/33

About

Healthcare

Commercial

Residential &
Hospitality

Miscellaneous

SPECIALTY CLINIC

Birmingham, AL
2020

9

About

Healthcare

Commercial

Residential &
Hospitality

Miscellaneous



INFUSION

Birmingham, AL
2019



DERMATOLOGY

Birmingham, AL
2020

About

Healthcare

Commercial

Residential &
Hospitality

Miscellaneous



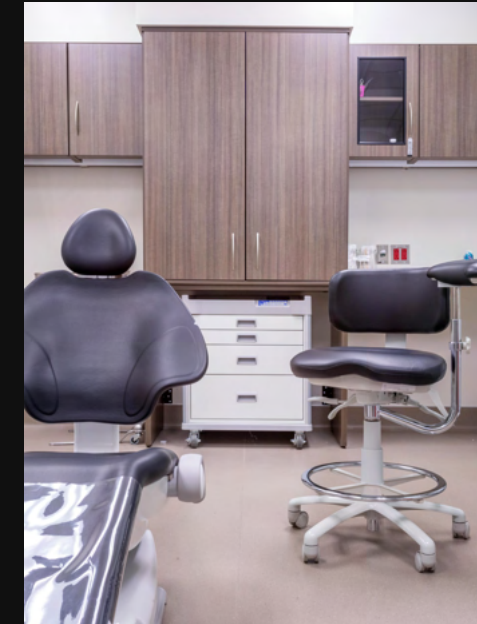
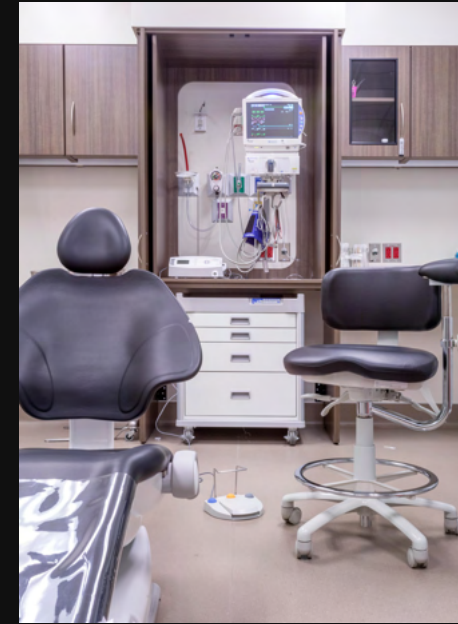
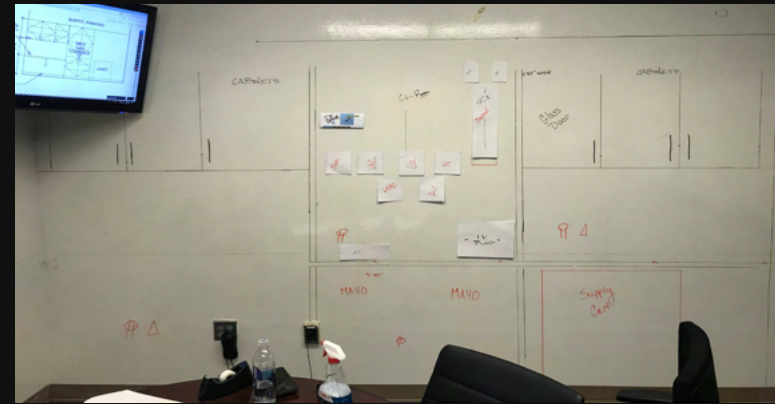
PRIMARY CARE

Birmingham, AL
2019

12



Brainstorming Session



About

Healthcare

Commercial

Residential &
Hospitality

Miscellaneous



PRIMARY CARE

Birmingham, AL
2017



ER NURSE STATION

Birmingham, AL
2016



HOSPITAL CAFETERIA

Atlanta, GA
2017



PHARMACY

Macon, GA
2016



MEDICAL CLINIC

Birmingham, AL
2015

17

About

Healthcare

Commercial

Residential &
Hospitality

Miscellaneous



Commercial

PROJECTS

RESEARCH OFFICE

Birmingham, AL
2024

Waiting- Main Lobby

LG-1a | Recharge Double Sided Modular Lounge
Bolster: Lugano, Frist
Seat: Purl, Skein
Welt: Parker, Magnet



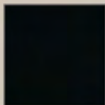
LG-2a | Recharge Modular Lounge Sofa
Bolster: Lugano, Frist
Seat: Purl, Skein
Welt: Parker, Magnet



CH-1a | Retreat Chair
Surround: Rush, Pumice
Seat: Livi, Dawn



AC-1 | Park Lo Pedestal Planter
Detail
Detail



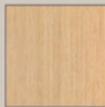
TB-2 | 22" x 48" Kintra Coffee Table
28"H
Laminate: Linen



TB-3 | 24" X&O CYLINDER END TABLE
TB-4 | 20" X&O CYLINDER END TABLE
20"H
Laminate: Linen



TB-5 | Heya Laptop Table
Base: Ion
Laminate: Linen



6 | furniture solutions



About

Healthcare

Commercial

Residential &
Hospitality

Miscellaneous

RESPITE ROOMS

Birmingham, AL
2022

About

Healthcare

Commercial

Residential & Hospitality

Miscellaneous

RESPITE
OPTION 1

Console Table

Proposed 36 Door Location

Scale 3/8" = 1'

Mobile Laptop Table

Stance Verity Lounge

- Chair: 31W x 30D x 34H
- 2-Seat Sofa: 53W x 32D x 34H
- Commodated Curved clean-out
- Field-replaceable parts

RESPITE
OPTION 2

Laptop Table

Ottoman

Scale 3/8" = 1'

Allsteel Reflect Lounge

- 44.75W x 32.75D x 50.75H
- Sight and acoustical Privacy
- Veneer Base
- Upholstered Seat & Shell

RESPITE
OPTION 3

Power Receptacle

Scale 3/8" = 1'

JSI Poet Privacy Lounge

- 52.5W x 34D x 54H
- Laminated Table with Power
- Wood or Metal Legs

RESPITE
OPTION 4

Power/USB

Scale 3/8" = 1'

JSI CAAV Privacy Pod

- 39W x 33.5D x 52H
- Integrated Power/USB
- Swivel Lamp

JSI Arwyn Guest Chair

- Swivel Base

RESPITE
OPTION 5

X&O Side Table with integrated Ella Lamp/USB

Scale 3/8" = 1'

OFS Orchestra Mini Recliner

- 27W x 32D (62D Extended) x 42.5H
- Optional Arm Clogs
- Beech Frame

Allsteel Cloud Screen

- 72W x 22D

RESPITE
OPTION B

Scale 3/8" = 1'

Pineapple Boden Bean Bag

- 35W x 32H
- Tangler-Resistant Seams
- Chipped Foam Filling
- 500lb weight capacity

Allsteel Recharge Modular Lounge

- 29"H Bolster Back

BluDot Perimeter Lamp

HOSPITAL IDEA SPACE

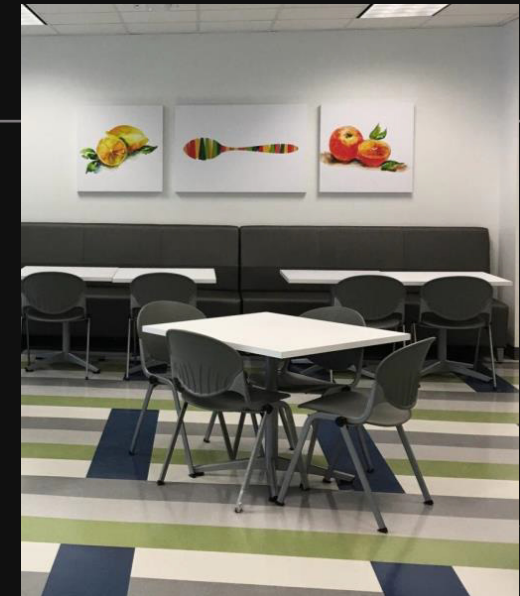
Alpharetta, GA
2018

This is a pilot area that allows staff throughout the hospital system to test different applications for the day before selecting new furniture for their departments.



ADMIN BUILDING

Birmingham, AL
2016



23

About

Healthcare

Commercial

Residential &
Hospitality

Miscellaneous



UAB HOSPITAL ADMIN BUILDING

PROJECT BACKGROUND:

The University of Alabama Birmingham Hospital Health Services Foundation brought 600 employees of varying administrative departments together under one roof, so facility management had an immediate need for the build-out project with a short turnaround time.

There was an emphasis on creating a cohesive design and blending existing furniture that would be reused from the different departments. UAB Hospital trusted Dekalb Office Environments to complete the project within these parameters.

PROJECT SCOPE:

- Two floors of ancillary furniture
- Private offices
- Training rooms
- Conference rooms
- Breakout rooms
- Staff lounges and break rooms



a success story



MEDICAL CLINIC

Birmingham, AL
2015



Residential

PROJECTS

SENIOR LIVING

Birmingham, AL
2020



RAGER RESIDENCE

Douglasville, GA
2013

About

Healthcare

Commercial

Residential & Hospitality

Miscellaneous



Exterior Color Palette

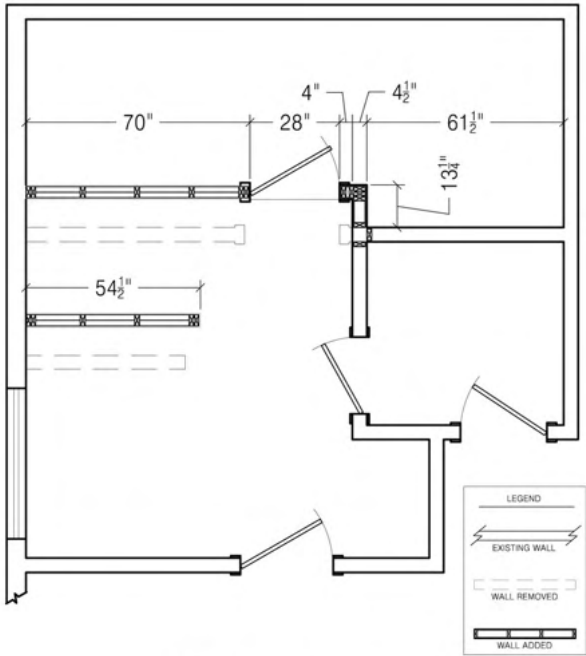
Page 2



Floor Plan- Finishes

Scale 1/4" = 1'

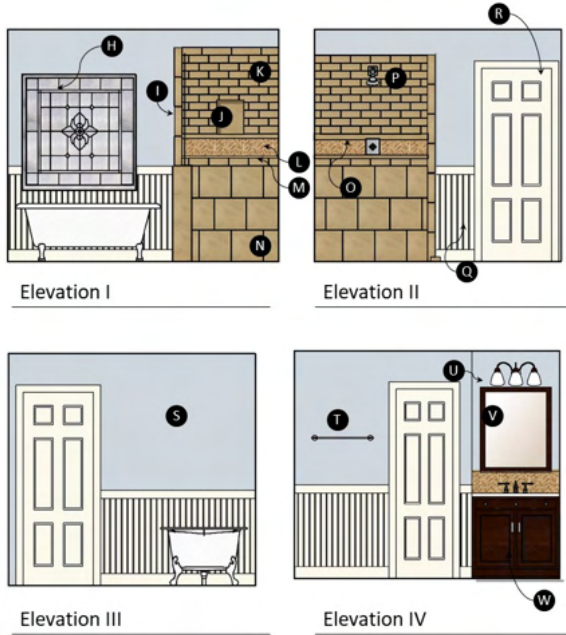
Page 5



Floor Plan- Demolition

Scale 1/2" = 1'

Page 12



Elevations- Finishes

Scale 3/8" = 1'

Page 14

LOVESAC FURNITURE PLAN

South Lake Tahoe, CA
2012

About

Healthcare

Commercial

*Residential &
Hospitality*

Miscellaneous



Miscellaneous

MASTER PLANNING & BID RESPONSE



Pages for various projects showing application planning prior, budgeting, and fabric approval process.

TASK CHAIRS					ESTIMATE TOTAL				
TAG	LOCATION	COST	QTY	SUBTOTAL	TAG	LOCATION	COST	QTY	SUBTOTAL
C1	Reports 3021	\$ 419	3	\$ 1,257.00	ST2	Corridor C304	\$ 294	1	\$ 294.00
C1	Nurse 3103-3104	\$ 419	7	\$ 2,933.00	ST1	Meds 3100	\$ 569	1	\$ 569.00
C1	Dictation 3102	\$ 419	2	\$ 838.00	ST1	Control 3024a	\$ 569	1	\$ 569.00
C1	Nurse 3091	\$ 419	4	\$ 1,676.00	ST1	Meds 3001	\$ 569	2	\$ 1,138.00
					ST1	Meds 3093	\$ 569	1	\$ 569.00
					ST1	Workroom 3031	\$ 569	2	\$ 1,138.00
NICU BAYS (x12)					TASK STOOLS				
TAG	ITEM	COST	QTY	SUBTOTAL	TAG	LOCATION	COST	QTY	SUBTOTAL
C11	Recliner	\$ 2,580	12	\$ 30,960.00	ST2	Corridor C304	\$ 294	1	\$ 294.00
L8	Sleeper Sofa 72"W	\$ 6,796	12	\$ 81,552.00	ST1	Meds 3100	\$ 569	1	\$ 569.00
					ST1	Control 3024a	\$ 569	1	\$ 569.00
					ST1	Meds 3001	\$ 569	2	\$ 1,138.00
					ST1	Meds 3093	\$ 569	1	\$ 569.00
					ST1	Workroom 3031	\$ 569	2	\$ 1,138.00
POST PARTUM ROOMS (x24)					NURSERY ISOLATION				
TAG	ITEM	COST	QTY	SUBTOTAL	TAG	ITEM	COST	QTY	SUBTOTAL
C11	Recliner	\$ 2,580	24	\$ 61,920.00	C12	Patient Ch & Ottoman	\$ 1,385	1	\$ 1,385.00
L8	Sleeper Sofa 72"W	\$ 6,796	24	\$ 163,104.00	T4	Laptop Table	\$ 340	1	\$ 340.00
LOCKERS 3085					REPORTS 3030				
TAG	ITEM	COST	QTY	SUBTOTAL	TAG	ITEM	COST	QTY	SUBTOTAL
S1	Lockers 12"W	\$ 669	11	\$ 7,359.00	C3	Side Chair- Poly	\$ 272	4	\$ 1,088.00
					T6	Café Table 36"Sq	\$ 685	1	\$ 685.00
LOCKERS 3064					LOBBY				
TAG	ITEM	COST	QTY	SUBTOTAL	TAG	ITEM	COST	QTY	SUBTOTAL
S1	Lockers 12"W	\$ 669	16	\$ 10,704.00	L5	Mod Lounge Config C	\$ 10,157	1	\$ 10,157.00
					L1	Lounge Chair, Large	\$ 2,250	2	\$ 4,500.00
					T1	Coffee Table, 36" Rd	\$ 1,488	1	\$ 1,488.00
					T3	End Table, 18" Round	\$ 959	1	\$ 959.00
					T4	Laptop Table	\$ 340	2	\$ 680.00
					T9	Parsons Table Bar Ht	\$ 3,457	1	\$ 3,457.00
					O3	Ottoman Small	\$ 2,505	1	\$ 2,505.00
					O4	Ottoman Large	\$ 3,154	1	\$ 3,154.00
					ST4	Bar Stool	\$ 992	4	\$ 3,968.00
TREATMENT 3084					MULTIPURPOSE 3026				
TAG	ITEM	COST	QTY	SUBTOTAL	TAG	ITEM	COST	QTY	SUBTOTAL
C4	Side Chair- Poly	\$ 175	2	\$ 350.00	C7	Nesting Chair- Poly	\$ 338	6	\$ 2,028.00
ST2	Phys Stool	\$ 294	1	\$ 294.00	T10	Flip Table 60"	\$ 850	3	\$ 2,550.00
PLAY ROOM 3083					REPORTS 3094				
TAG	ITEM	COST	QTY	SUBTOTAL	TAG	ITEM	COST	QTY	SUBTOTAL
O1	Ottoman Stool Child	\$ 694	3	\$ 2,082.00	C3	Side Chair- Poly	\$ 272	4	\$ 1,088.00
O2	Ottoman Child	\$ 1,134	2	\$ 2,268.00	T6	Café Table 36"Sq	\$ 685	1	\$ 685.00
S3	Tall Storage Cabinet	\$ 730	2	\$ 1,460.00					
T5	Children's Table	\$ 626	1	\$ 626.00	NURSE LOUNGE 2013				
					TAG	ITEM	COST	QTY	SUBTOTAL
					L2	Lounge Chair, Small	\$ 3,078	2	\$ 6,156.00
					L6	Modular Lounge Sofa	\$ 6,884	1	\$ 6,884.00
OFFICES (X7)					SLEEP ROOMS (x2)				
TAG	ITEM	COST	QTY	SUBTOTAL	TAG	ITEM	COST	QTY	SUBTOTAL
C1	Task Chair	\$ 419	7	\$ 2,933.00	B1	Twin Bed & Mattress	\$ 2,471	2	\$ 4,942.00
C2	Side Chair	\$ 326	7	\$ 2,282.00					

Manufacturer	Item	Fabric Manuf	Fabric Description	Approved	Grade	NOTES/COM Calc
JSI	Oxley	HBF	Velvet Mix 977, 80 Paper Mache	✓	COM	2.25 yds/bench
H Contract	Alyssa	Pollack	Hide Away, Elephant	✓	8	
Bernhardt	Claire	HBF	Tattoo Toile, Clay	✓	COM	5 yds/ chair (Add 25% repeat)
Bernhardt	Claire	Momentum	Smart Soft, Clay	✓	COM	4 yds/ chair
Bernhardt	Claire	Brentano	Intaglio, Crystal	✗		Discontinued
Bernhardt	Claire	Concertex	Triumph, Rhine	✓	COM	4 yds/ chair
Bernhardt	Claire	Architex	Brixton, Brick	✓	COM	4.6 yds/ chair
Fairfield	Coltrane	Architex	Mararis Blush & Blue	✓	U+ \$68 grade	Added 15% chair
Bernhardt	Charlotte	Pollack	Hide Away, Elephant	✓	COM	1 yd/ chair
Bernhardt	Claire	Brentano	Scene in Pale Grape & Bright Bluestone	✓	COM	4.4 yd/ chair
Bernhardt	Claire	Architex	Ultracrush, Beckham	✓	COM	Added 10% repeat
Bernhardt	Amri	HBF	Pebbled, Parcel	✓	COM	4 yds/ chair
Bernhardt	Amri	Architex	Ultracrush, Beckham	✗		7.3 yds/ chair
Arcadia	Hado	Pollack	Hide Away, Elephant	✓	COM	Tears too easily
ERG	Charlotte	Pollack	Satisfaction, Gulf	✗		1.5 yds/ chair
ERG	Charlotte	HBF	Tattoo Toile, Clay	✓	COM	Fabric too stiff
ERG	Charlotte	Carnegie	Hinge 8	✓	COM	6 yds/chair
Bernhardt	Ravel	Pollack	Dandy, Cricket	✓	COM	11
Nienkamper	Rowan	HBF	Afghan (Mary Jo Miller), Sterling Silver * Double check color	✓	COM	4.25 yd/ chair
Allsteel	Vicinity	Knoll Luxe	Arezzo, Dolce	✗		7 YDS/ SOFA
Bernhardt	Ravel	Burch	Abyss, Sunset & Ultraviolet	✓	COM	5.89 yd/ chair
Bernhardt	Ravel	HBF	Woven Memory, Turmeric	✓	COM	Added 15% repeat
Bernhardt	Ravel	Carnegie	Brushstroke 6560 COLOR7	✓	COM	5.32 yd/ chair
JSI	Arwyn	Pollack	Tokyo in Lily Pond, Harajuku, Indigo, & Iris	✓	COM	Added 32% repeat
Bernhardt	Ravel	Momentum	Imperial Mohair, Evening	✓	COM	4.25 yd/ chair
Allsteel	Vicinity	Architex	Pivot, Rosewood	✗		
JSI	Indie Round Pouf	Pollack	Color Field, Poppy	✓	COM	1 yd/ pouf
ERG	Addy	Burch	Memento, Earl Grey	✓	COM	2.5 YDS/ chair
Allsteel	Quip	HBF	Pebbled, Parcel	✓	5	
Allsteel	Vicinity	Concertex	Quadrant, Resort	✗		
JSI	Jude	Pollack	Hide Away, Elephant	✓	COM	(Seat or all) 0.75 yds/chair
OFS	Bistro	CF Stinson	Inked, Newberry	✓	12	
OFS	Bistro	Pollack	Hide Away, Elephant	✓	COM	1 yd/ chair
OFS	Bistro	CF Stinson	Inked, Nebula	✓	12	
Bernhardt	Ravel	Pollack	Satisfaction, Gulf	✓	COM	4.25 yd/ chair
Bernhardt	Ravel	Richloom	Orris, Ochre	✓	COM	4.25 yd/ chair
Allermuir	Jacier	Architex	Baxter, Truffle	✓	COM	1 yd/ chair

About

Healthcare

Commercial

Residential & Hospitality

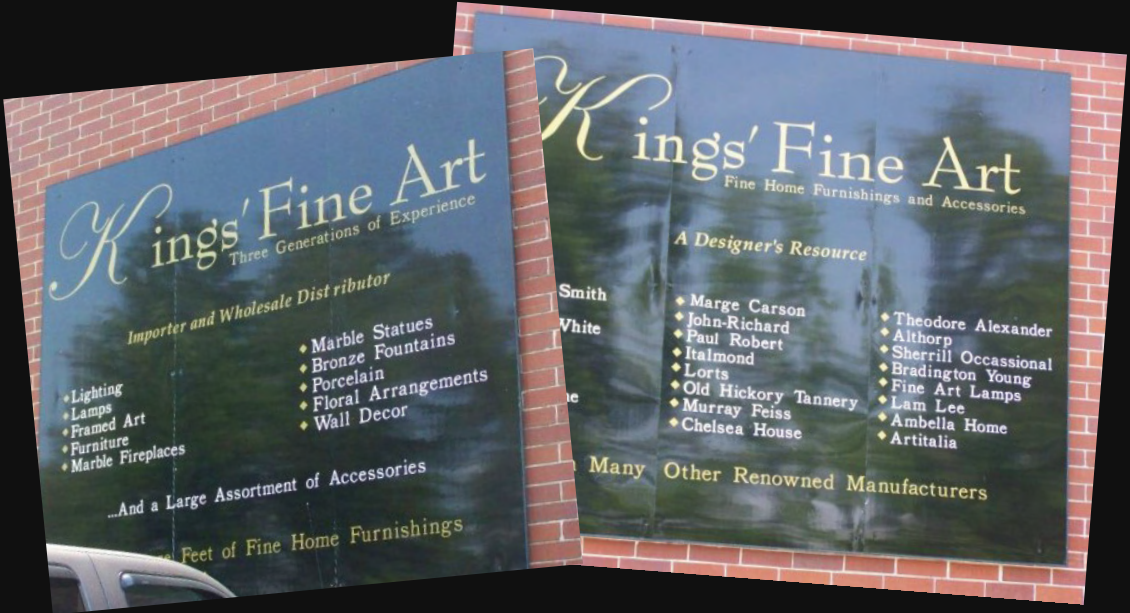
Miscellaneous



About
Healthcare
Commercial
Residential & Hospitality

Miscellaneous

Designed exterior signs for Kings' Fine Art in Atlanta, GA



In 2011, I wrote an article series for SingleBubblePop.com about how to have a more energy and environmentally friendly holiday season. The articles included tips and research about energy use and waste surrounding the holidays.

RENDERINGS

32



About

Healthcare

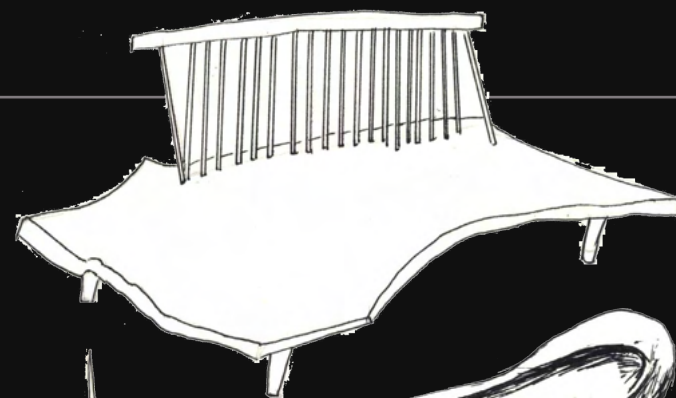
Commercial

Residential &
Hospitality

Miscellaneous

RENDERINGS

These hand renderings were created with Prismacolor markers and pencils.



As an Intern for Stephanie Doerr, I created a sketch and rendering for the Sue residence's bedding and draperies. I chose fabrics from the chosen palette that coordinated with the style throughout the rest of the home.

About

Healthcare

Commercial

Residential &
Hospitality

Miscellaneous

Thank You